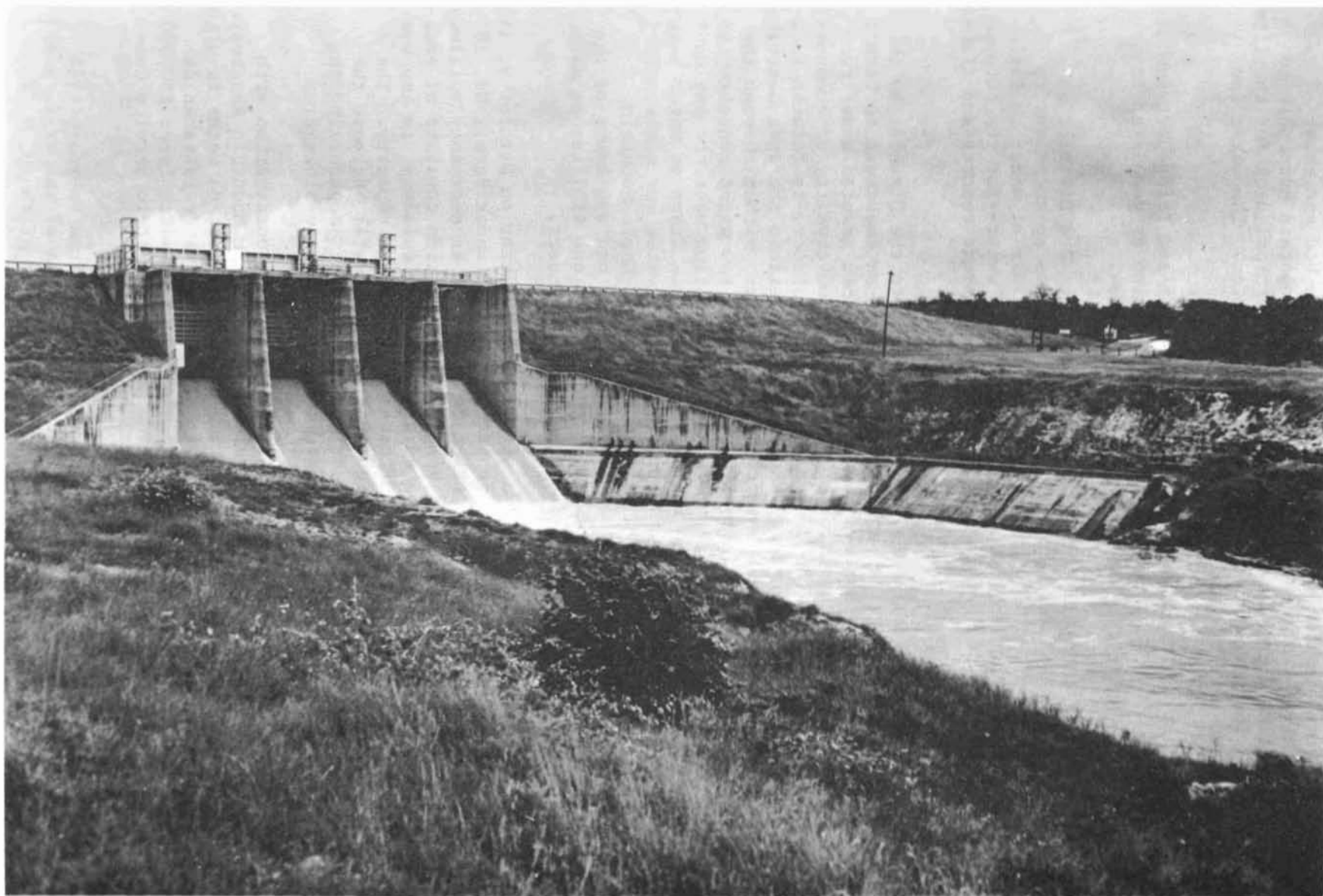
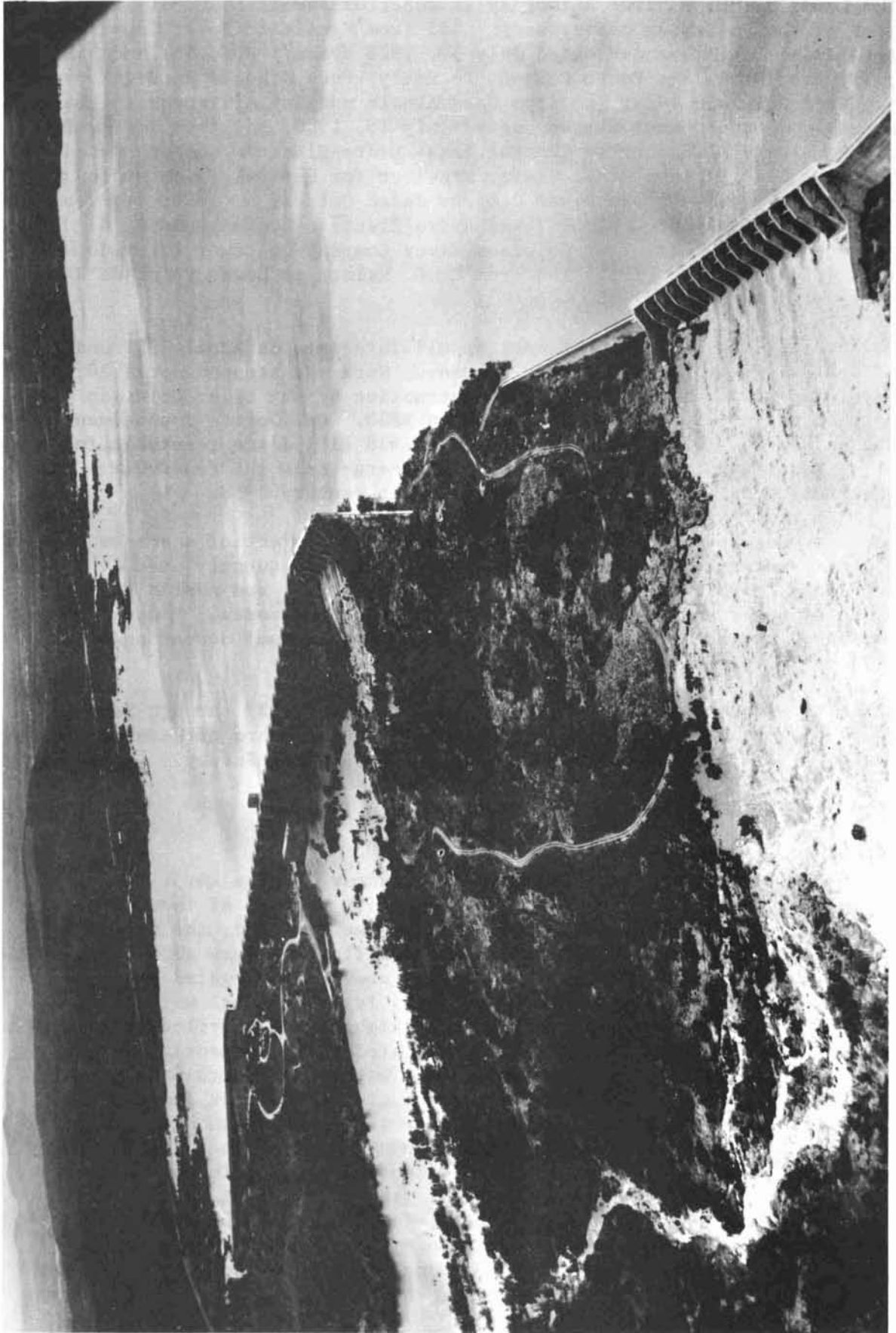


Bridgeport Dam and Bridgeport Reservoir. Furnished by Tarrant County Water Control and Improvement District No. 1.



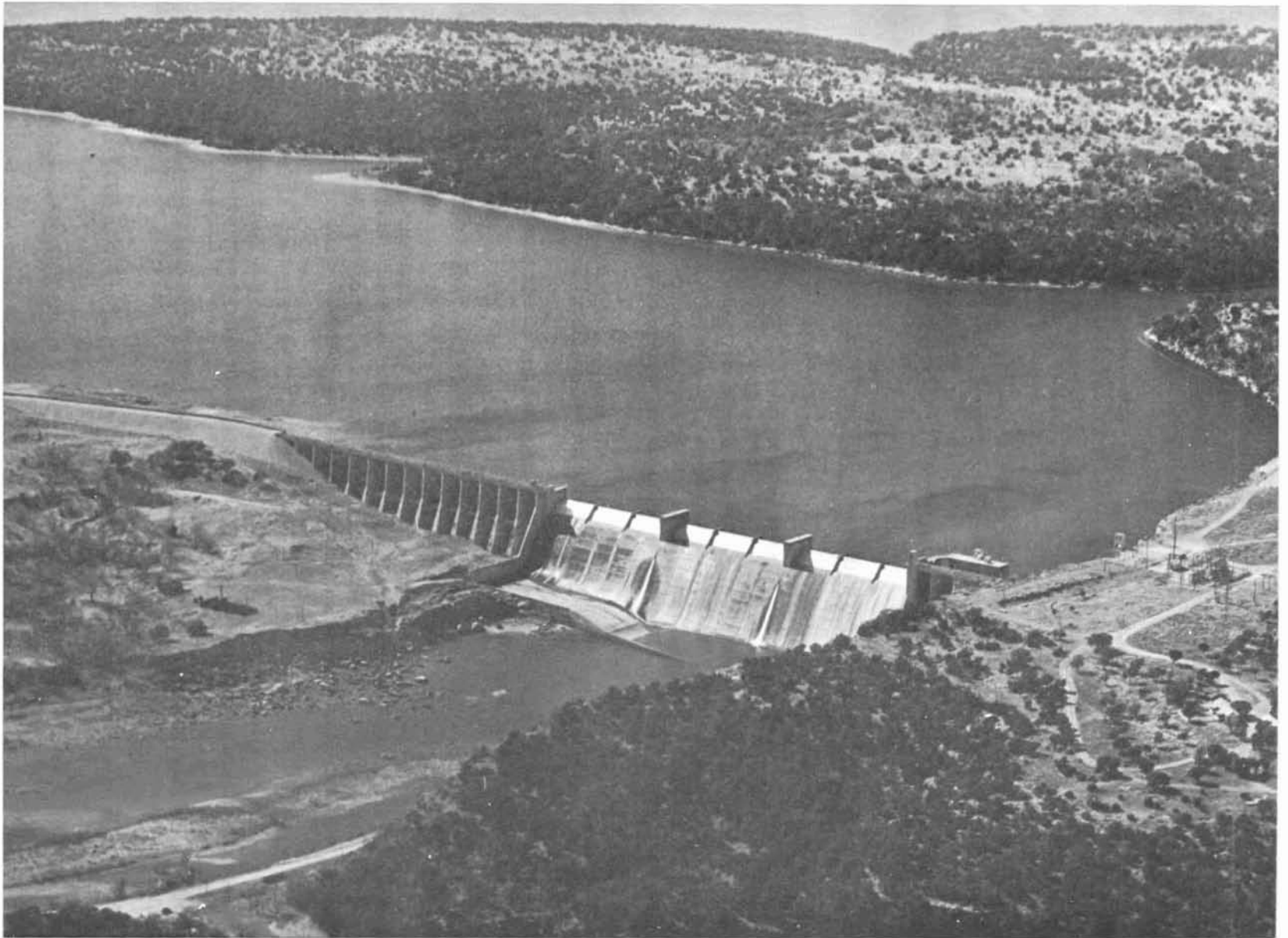
Eagle Mountain Dam. Furnished by Tarrant County Water Control and Improvement District No. 1.



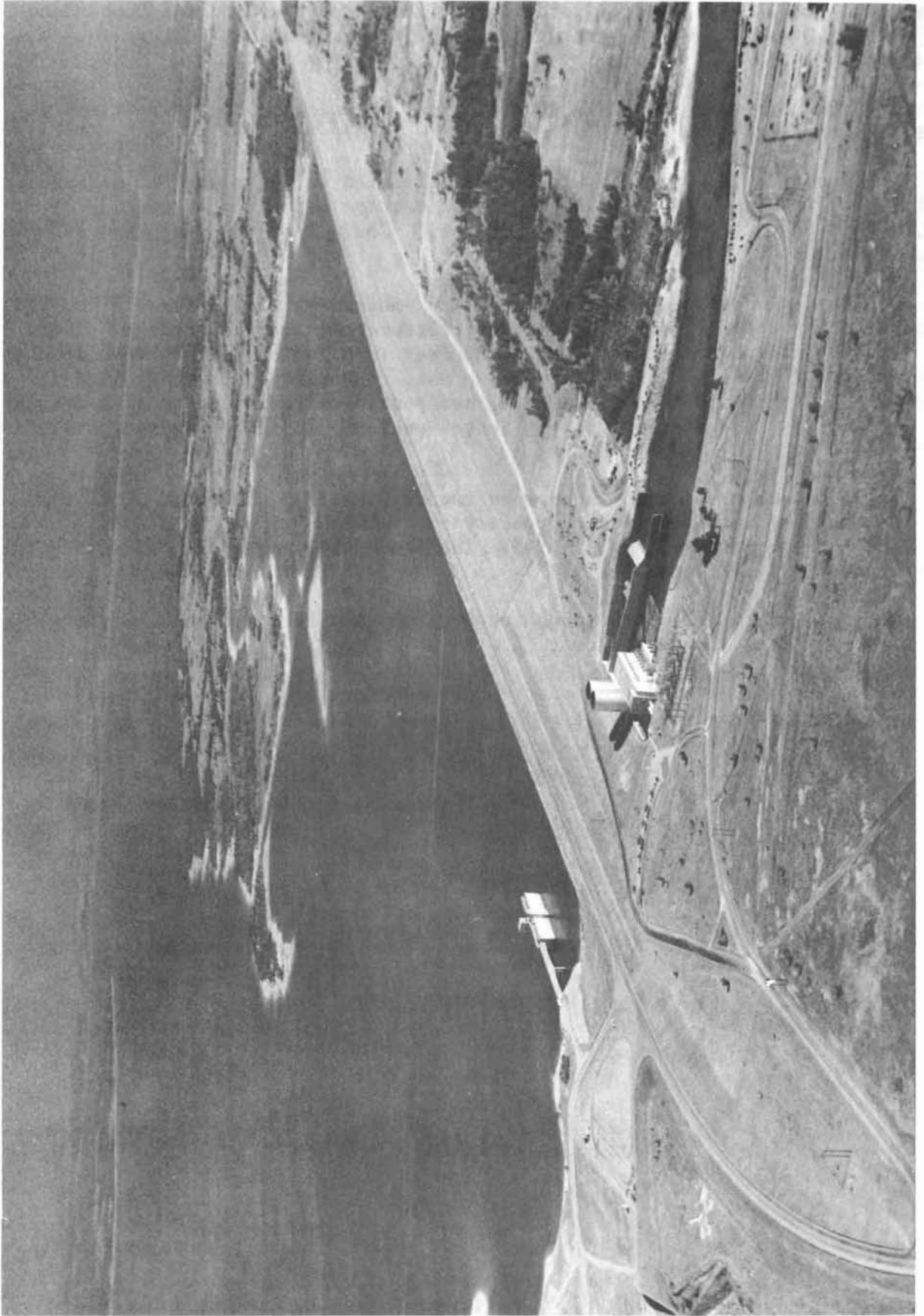
Buchanan Dam and Lake Buchanan. Furnished by Lower Colorado River Authority.



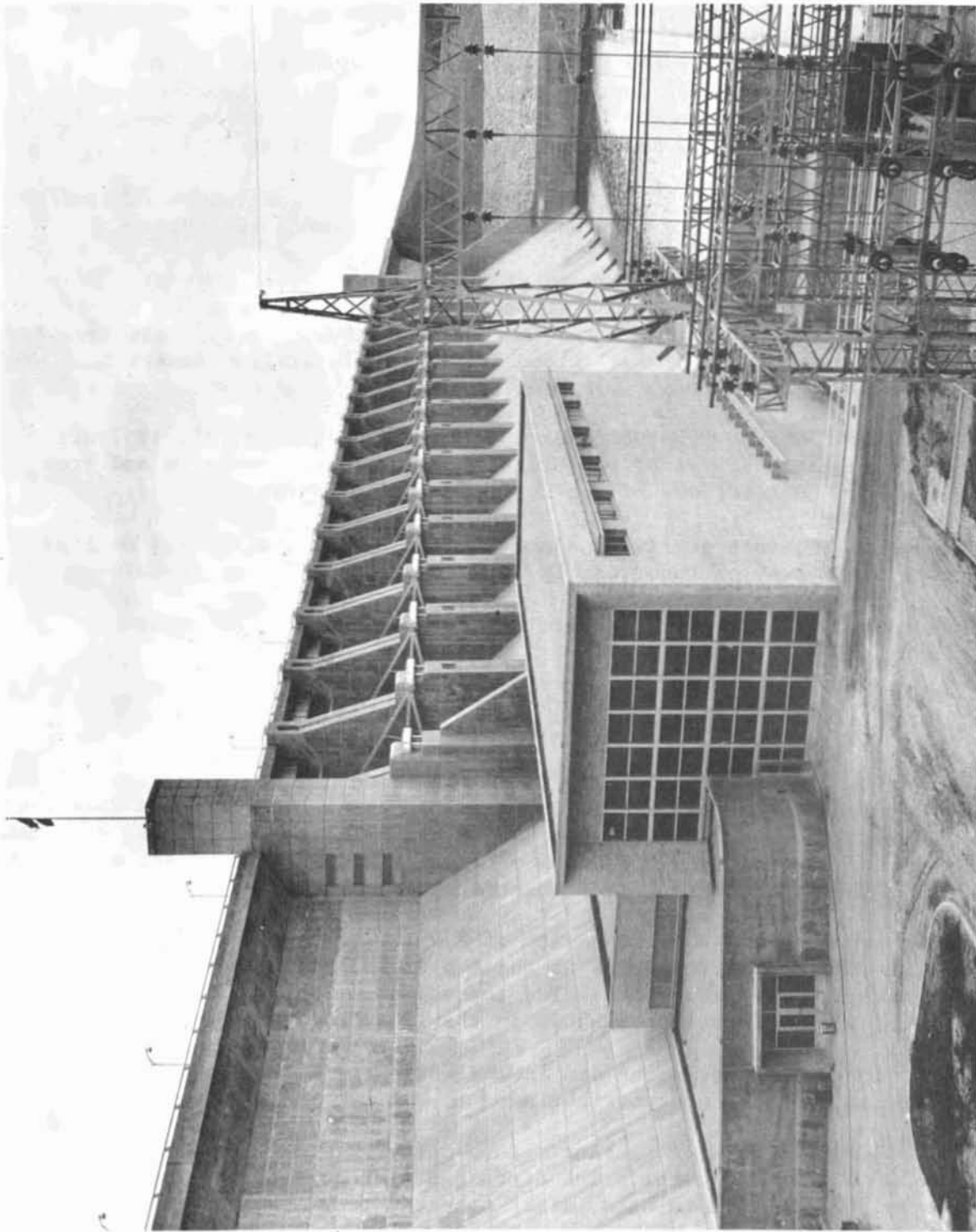
Mansfield Dam and Lake Travis. Furnished by Lower Colorado River Authority.



Morris Sheppard Dam and Possum Kingdom Reservoir. Furnished by Brazos River Authority.



Denison Dam and Lake Texoma. Furnished by U. S. Army Corps of Engineers, Tulsa District.



Whitney Dam and Power House. Furnished by U. S. Army Corps of Engineers,  
Fort Worth District.



Lavon Dam and Lavon Reservoir. Furnished by U. S. Army Corps of Engineers,  
Fort Worth District.





Texarkana Dam and Texarkana Reservoir. Furnished by U. S. Army Corps of Engineers,  
New Orleans District.



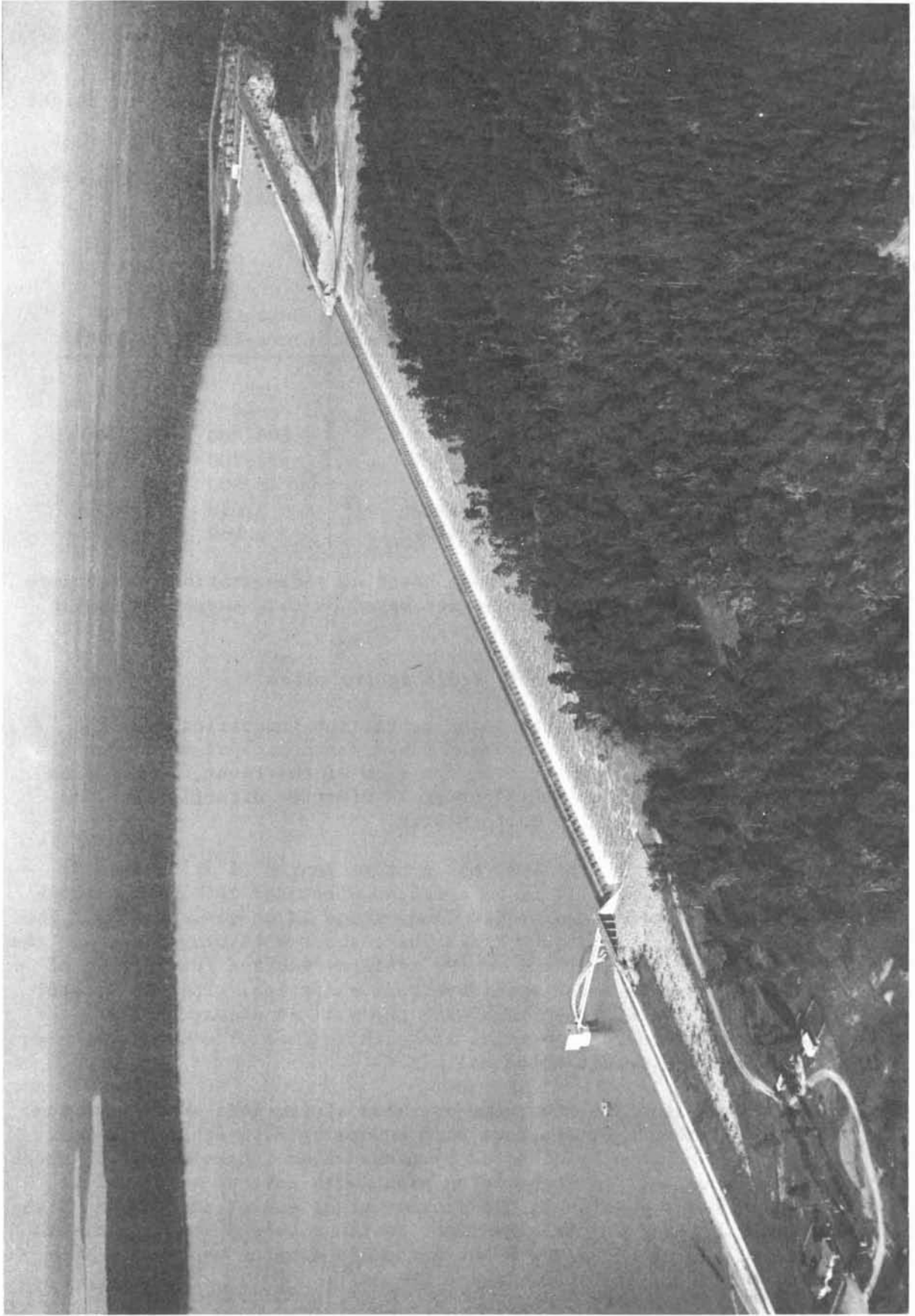
Lewisville Dam and Garza-Little Elm Reservoir. Furnished by U. S. Army Corps of Engineers, Fort Worth District.



Falcon Dam and International Falcon Reservoir. Furnished by International Boundary and Water Commission, United States and Mexico.



Colorado River Dam and Lake J. B. Thomas. Furnished by Colorado River Municipal Water District.



San Jacinto Dam and Lake Houston. Furnished by City of Houston.



Ferrells Bridge Dam and Lake O' the Pines. Furnished by U. S. Army Corps of Engineers,  
New Orleans District.



Wesley E. Seale Dam and Lake Corpus Christi (with old Mathis Dam at left center before it was breached April 26, 1958). Furnished by Lower Nueces River Water Supply District.



Sam Rayburn Dam and Sam Rayburn Reservoir. Furnished by U. S. Army Corps of Engineers,  
Fort Worth District.





Iron Bridge Dam and Lake Tawakoni. Furnished by Sabine River Authority



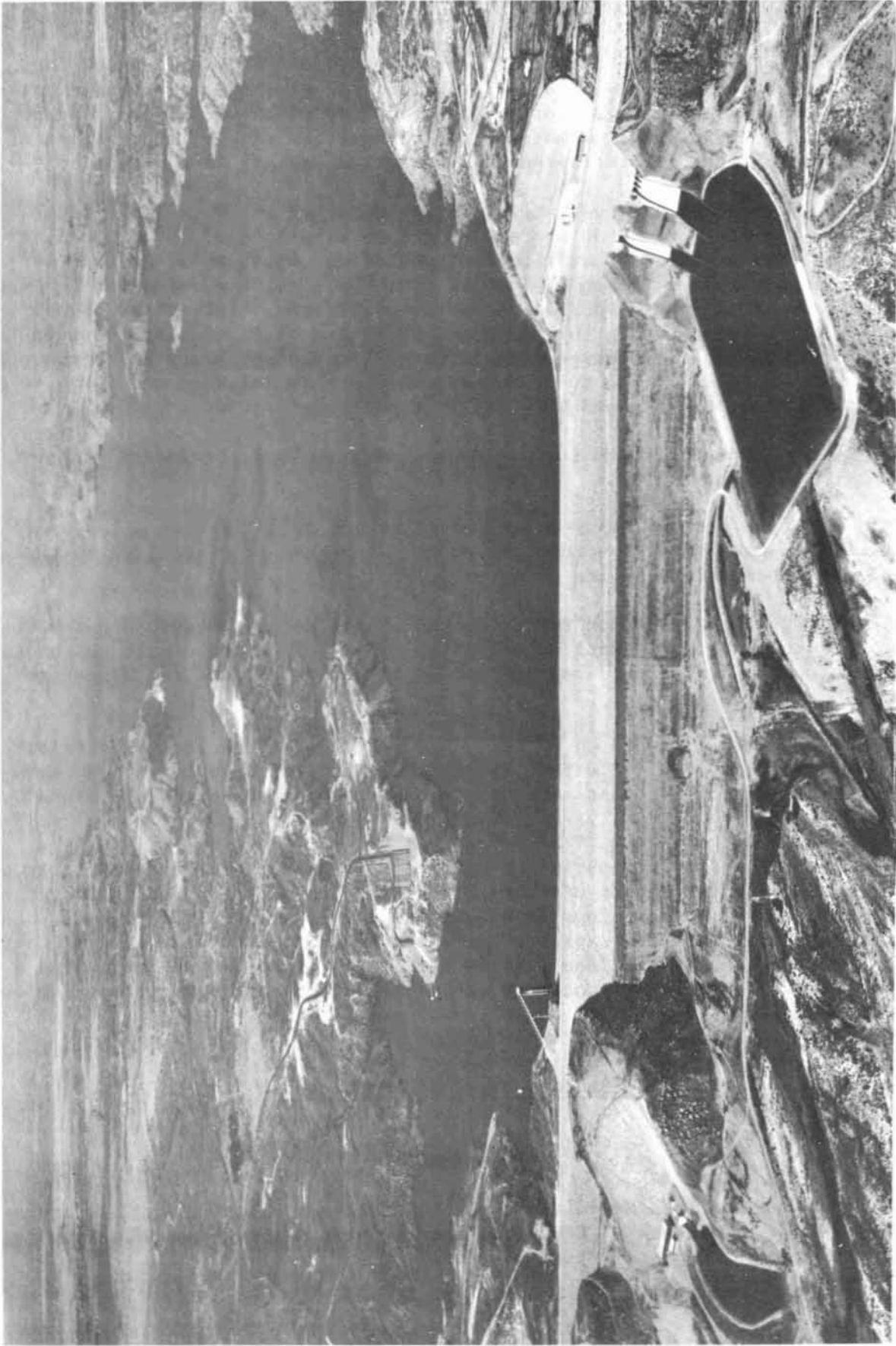
Canyon Dam and Canyon Reservoir. Furnished by U. S. Army Corps of Engineers.  
Fort Worth District.



Twin Buttes Dam and Twin Buttes Reservoir. Furnished by U. S. Bureau of Reclamation,  
Austin Development Office.



Cedar Creek Reservoir Spillway. Furnished by Tarrant County Water Control and Improvement District No. 1.



Sanford Dam and Lake Meredith. Furnished by U. S. Bureau of Reclamation, Austin Development office.